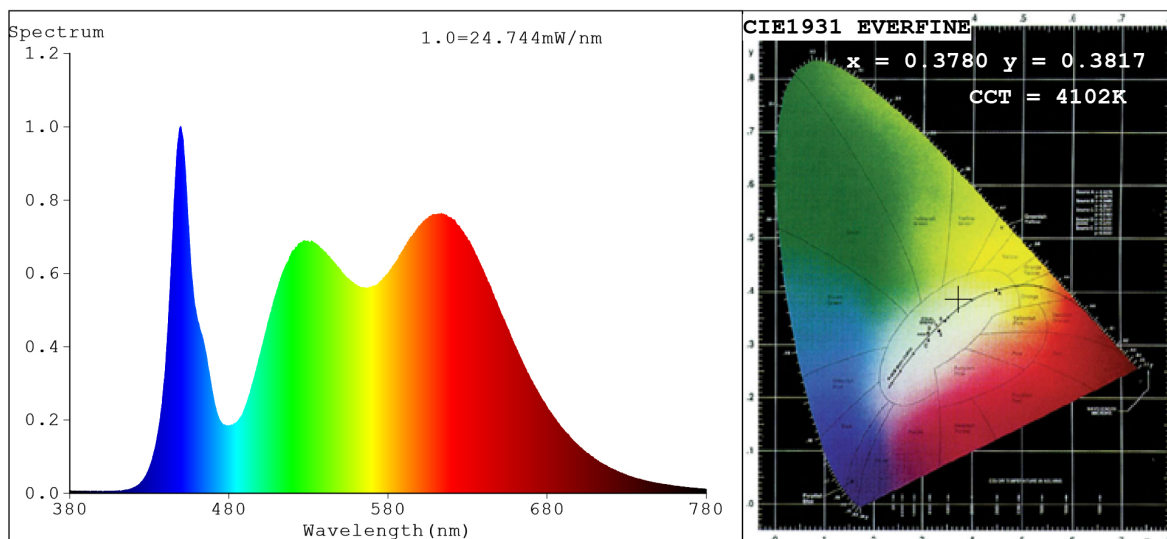


Spectrum Test Report



Color Parameters:

Chromaticity Coordinate: $x=0.3780$ $y=0.3817$ $u'=0.2216$ $v'=0.5034$
 CCT=4102K(Duv=0.0030) Dominant WL:Ld =577.1nm Purity=28.0%
 Ratio:R=20.0% G=76.7% B=3.4%; Peak WL:Lp=449.8nm FWHM=16.8nm
 Render Index:Ra=93.0 CRI=88.5 TM30:Rf=91 Rg=101
 R1 =97 R2 =94 R3 =90 R4 =94 R5 =95 R6 =92 R7 =95
 R8 =88 R9 =63 R10=83 R11=91 R12=67 R13=96 R14=94 R15=92

Photo Parameters:

Flux = 1098 lm Eff. : 116.33 lm/W Fe = 3.485 W

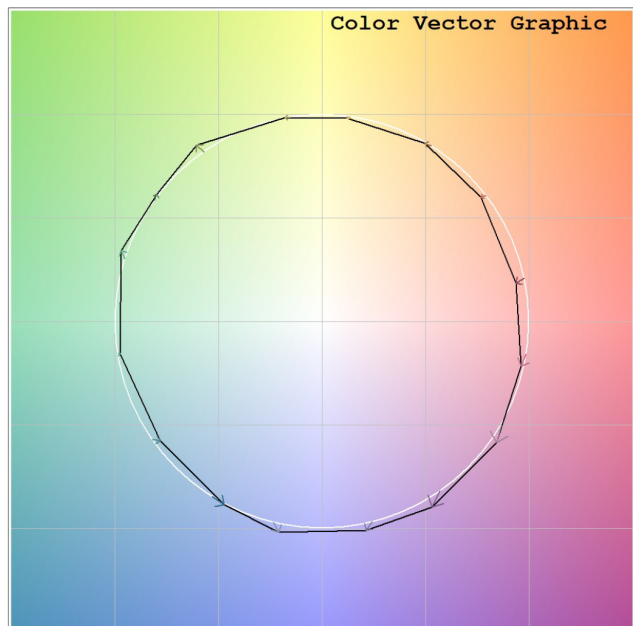
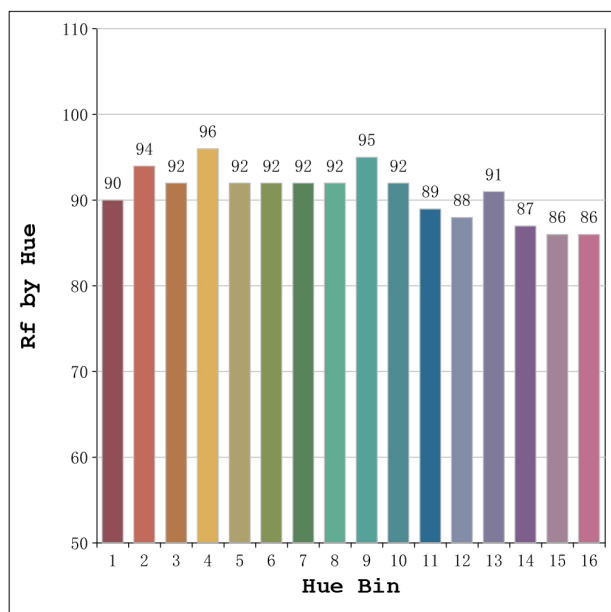
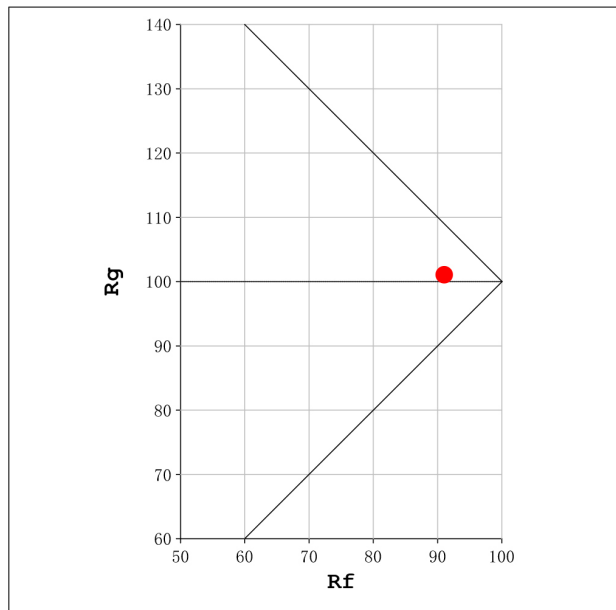
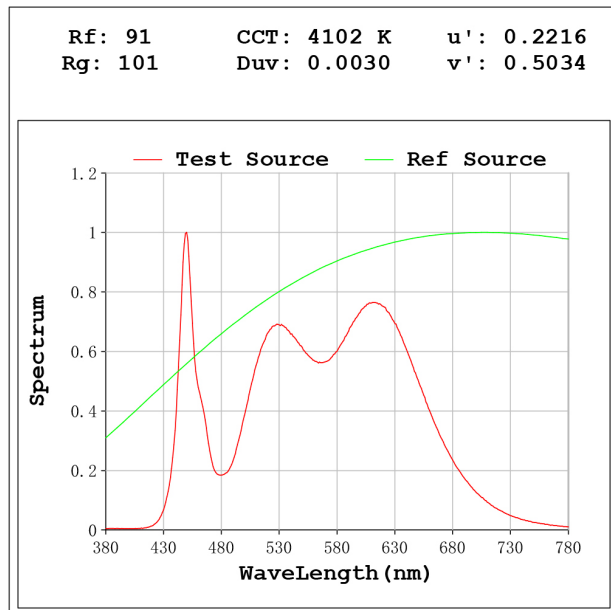
Electrical parameters:

V = 23.998 V I = 0.3933 A P = 9.438 W PF = 1.000

Status: Integral T = 1000 ms Ip = 37784 (58%)

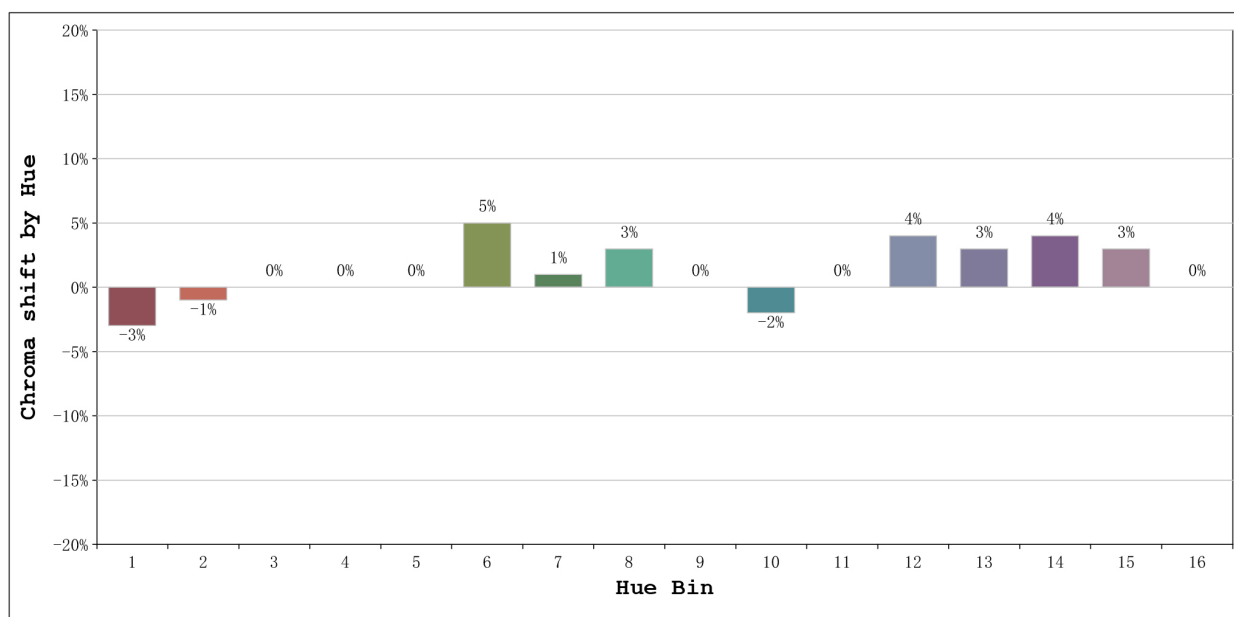
Model:Ecoled Cob slim 4000K
 Tester:Sergio Carneros
 Temperature:27Deg
 Manufacturer:Luz Negra S.L

Number: 31.141
 Date:2023-11-20 11:24:11
 Humidity:40%
 Remarks:100cm de Tira flexible



Model:Ecoled Cob slim 4000K
 Tester:Sergio Carneros
 Temperature:27Deg
 Manufacturer:Luz Negra S.L

Number: 31.141
 Date:2023-11-20 11:24:11
 Humidity:40%
 Remarks:100cm de Tira flexible



			Graphic shift(%)	
Hue Bin	Hue Angle	Rf	Chroma	Hue
1	0.0° - 22.5°	90	-3	-1
2	22.5° - 45.0°	94	-1	1
3	45.0° - 67.5°	92	0	3
4	67.5° - 90.0°	96	0	1
5	90.0° - 112.5°	92	0	2
6	112.5° - 135.0°	92	5	1
7	135.0° - 157.5°	92	1	-2
8	157.5° - 180.0°	92	3	-2
9	180.0° - 202.5°	95	0	0
10	202.5° - 225.0°	92	-2	3
11	225.0° - 247.5°	89	0	7
12	247.5° - 270.0°	88	4	3
13	270.0° - 292.5°	91	3	-3
14	292.5° - 315.0°	87	4	-7
15	315.0° - 337.5°	86	3	-8
16	337.5° - 360.0°	86	0	-5

Model:Ecoled Cob slim 4000K
 Tester:Sergio Carneros
 Temperature:27Deg
 Manufacturer:Luz Negra S.L

Number: 31.141
 Date:2023-11-20 11:24:11
 Humidity:40%
 Remarks:100cm de Tira flexible